



sifam tinsley
PRECISION INSTRUMENTATION

CURRENT TRANSFORMER
www.sifamtinsley.co.uk



DATASHEET

Issue 1

**NEW
PRODUCT**



Multifunction Meters

Transducers & Isolators

Temperature Controllers

Converters & Recorders

Digital Panel Meters

Current Transformers

Analogue Panel Meters

Shunts

Digital Multimeters

Clamp Meters

Insulation Testers

CORE BALANCED CURRENT TRANSFORMER (CBCT)

SUBJECT TO CHANGE WITHOUT NOTICE

This datasheet superseded all previous versions – please keep for future reference

Product Features:

- Compact design, Reliable and accurate
- Detection on of earth leakage current
- Common wall mounting clamp for all sizes
- Sealable cap for secondary terminal connections (Maximum sealing wire diameter should be 1.8mm).

CORE BALANCED CURRENT TRANSFORMER



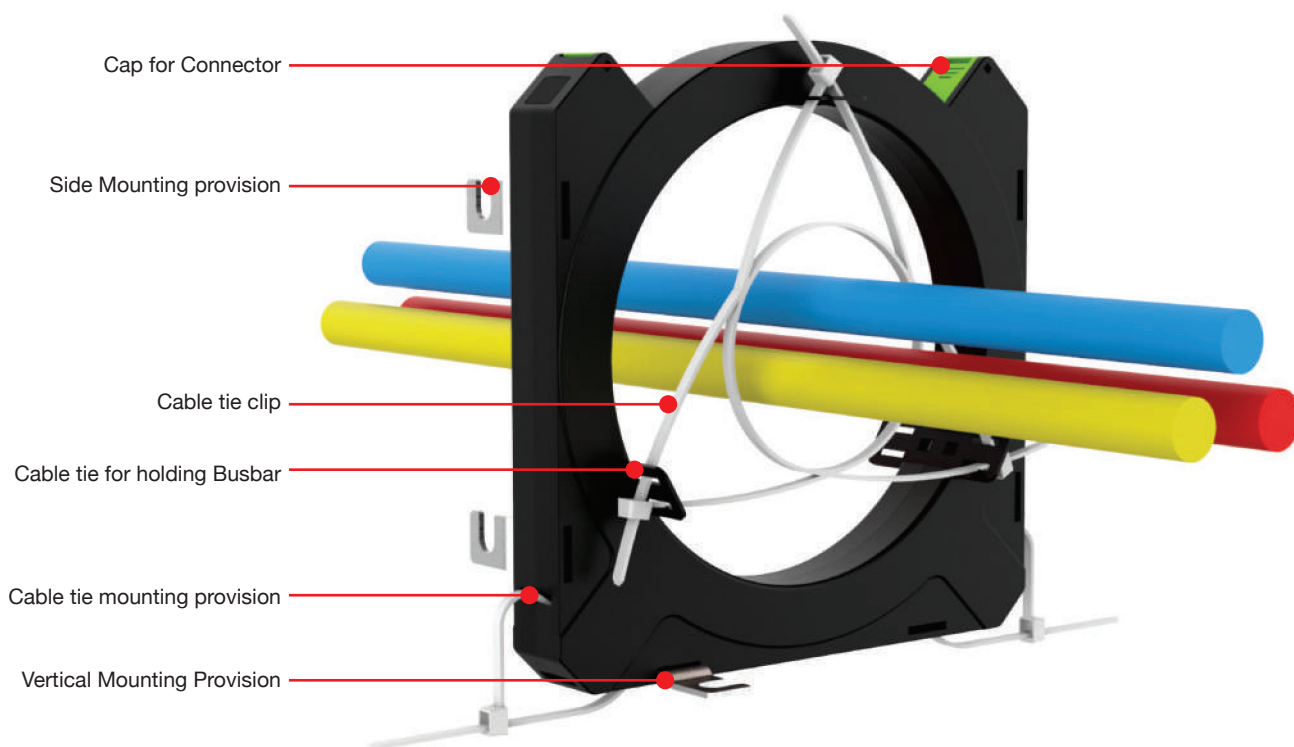
Product Size and Weights:

Name	Size	Weight
CBCT 38	38-71 (20)	0.12 Kg
CBCT 57	57-97 (20)	0.15 Kg
CBCT 70	70-109 (20)	0.18 Kg
CBCT 120	120-153 (20)	0.29 Kg
CBCT 210	210-250 (20)	0.51 Kg

Technical Specifications:

Applicable Standard	IEC 61869 - part 1-2
Case	Nylon 6, 20% GF, FR (30) Black
Connection	Screw Type terminal connection
a) Value	M2.5, 0.4Nm
b) Wire Range	0.5 ~ 2.5mm ² (suitable for pin type lug)
CT Ratio	600:1 & 1000:1
Maximum Operating Voltage (Um)	0.72 KV Maximum
Test Voltage	3kV, 50 Hz for 1 minute.
Operating Frequency	50/60 Hz.
Input Current	30 mA - 30 A
Rated Continuous Thermal Current (In)	100 A
Thermal Short Circuit Current (Ith)	60 x In
Dynamic Short Circuit Current (Idyn)	2.5 x Ith
Ambient Temperature	-25°C to 55°C
Storage Temperature	-50°C to 80°C
Distance between ELR & CBCT	< 1 meter

Product Features

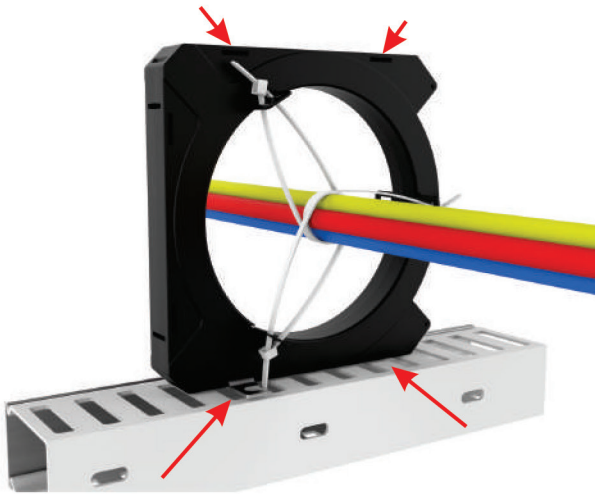


Model / Features	Mounting clamp for vertical mounting	Mounting clamp for horizontal mounting	Cable Tie for vertical mounting	Cable Tie for Busbar mounting	Terminal Cap
CBCT 38	✓	✗	✓	✗	✓
CBCT 57	✓	✓	✓	✗	✓
CBCT 70	✓	✓	✓	✗	✓
CBCT 120	✓	✓	✓	✓	✓
CBCT 210	✓	✓	✓	✓	✓

Product Features

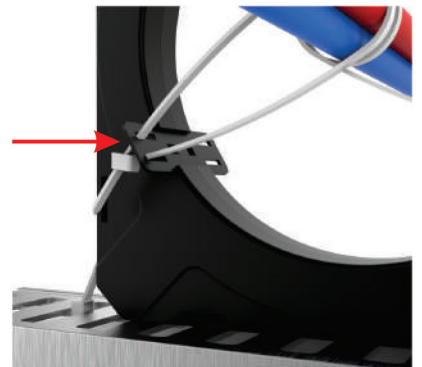
Cap for Connector

Protective cap for connectors on either side of the CT ensures that the terminal is well covered from external entities. The cap also contains sealing.



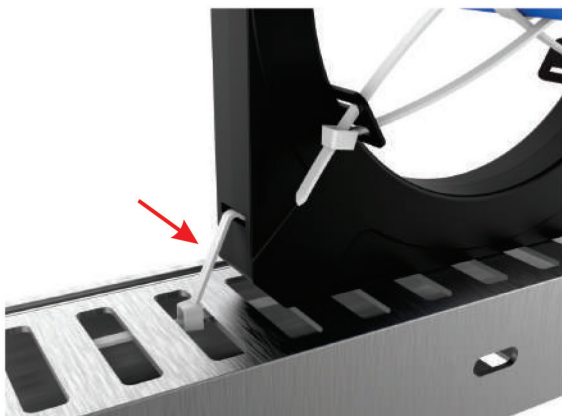
Side Mounting Provision

CBCT can be mounted both horizontally as well as vertically considering the practical challenges occurred while on site installation.



Cable tie Clips

Cable tie clips are located on the CT to ensure that the Busbar is centrally aligned so as to get absolute output. The Cable tie clip should be ordered separately

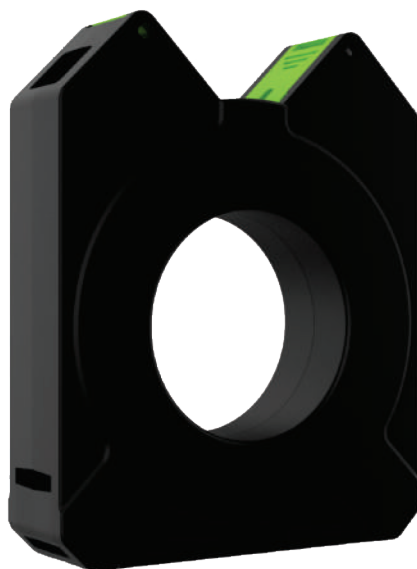


Vertical Cable Tie Mounting

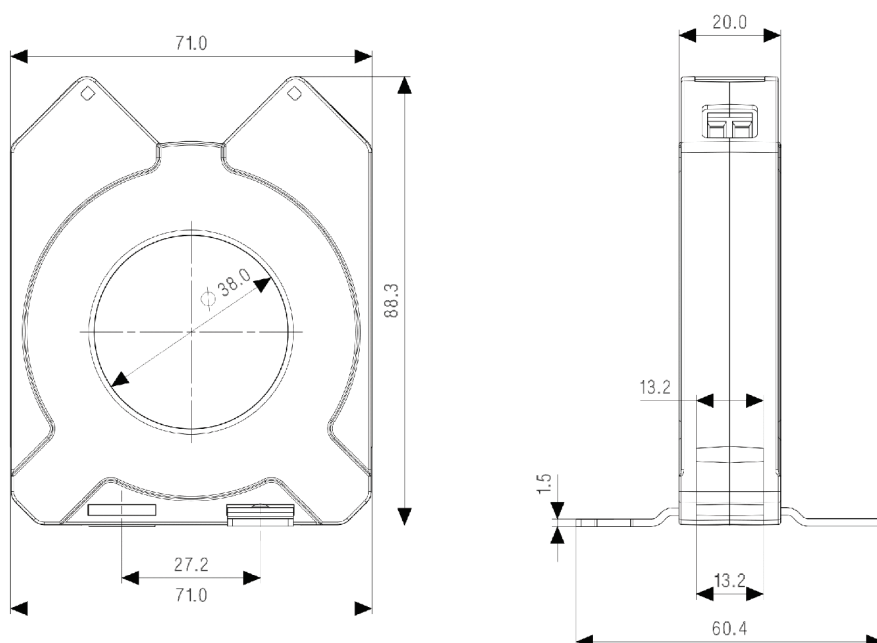
Vertical mounting is basically provided in all categories of CT, although vertical mounting with the help of cable tie gives more flexibility while on site installation.



CBCT 38



DIMENSIONAL DETAILS:

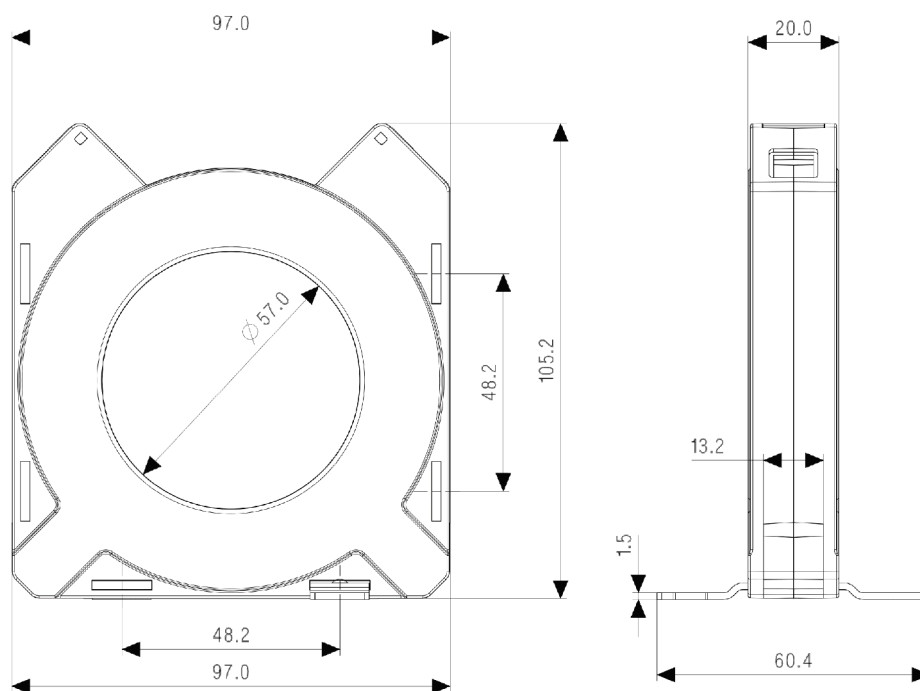


Ordering Code : CB08-0101000000000

CBCT 57



DIMENSIONAL DETAILS:

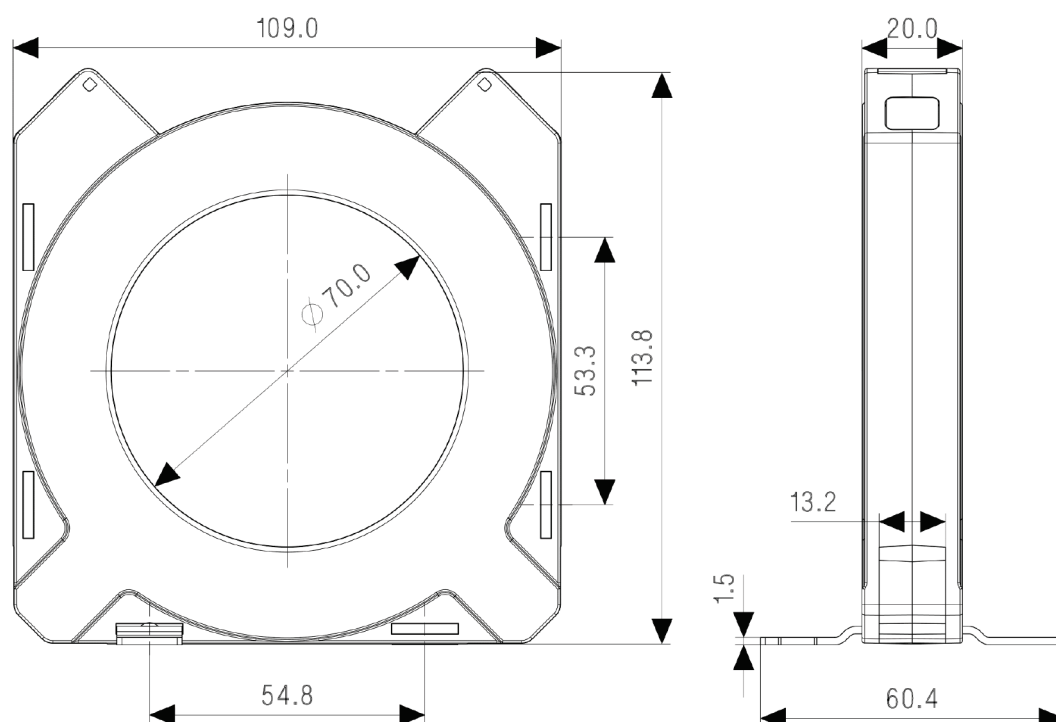


Ordering Code : CB09-0101000000000

CBCT 70



DIMENSIONAL DETAILS:

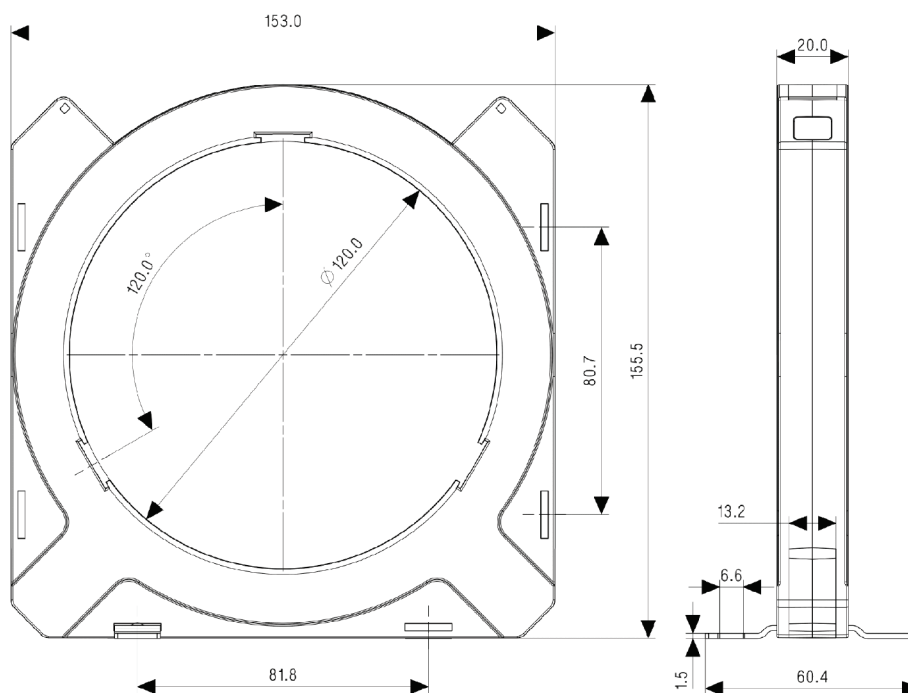


Ordering Code : CB10-0101000000000

CBCT 120



DIMENSIONAL DETAILS:

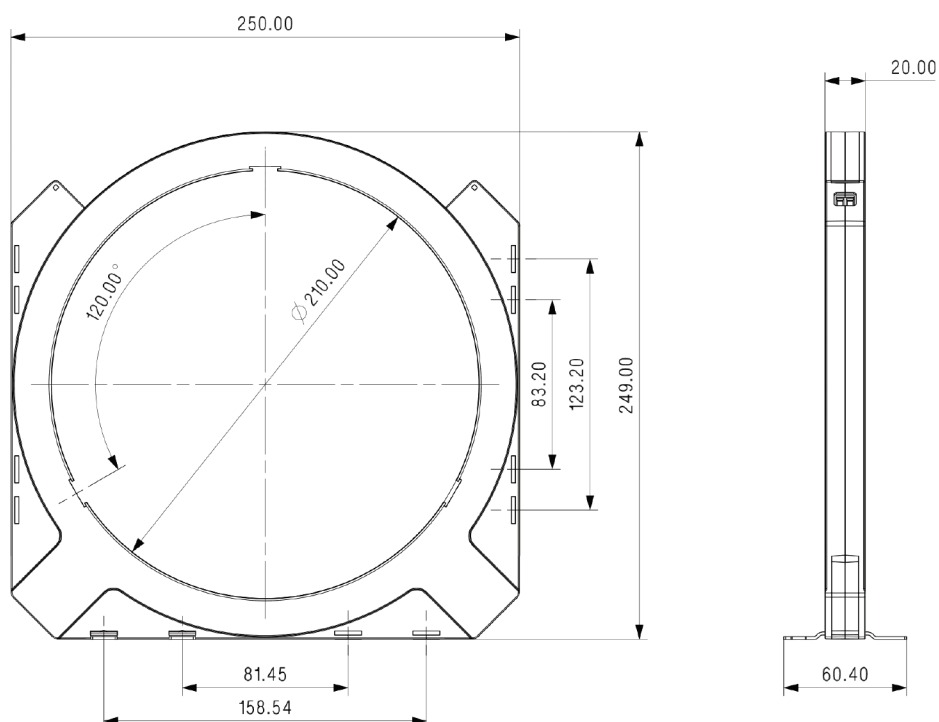


Ordering Code : CB11-0101000000000

CBCT 210



DIMENSIONAL DETAILS:



Ordering Code : CB12-0101000000000

Contact



Sifam Tinsley Instrumentation Ltd

1 Warner Drive
Springwood Industrial Estate
Braintree
Essex
CM7 2YW

Tel: 01376 335271
Email: sales@sifamtinsley.com

www.sifamtinsley.co.uk